



Coupling cabinet



Filter mat box type 5



Exhaust air purification



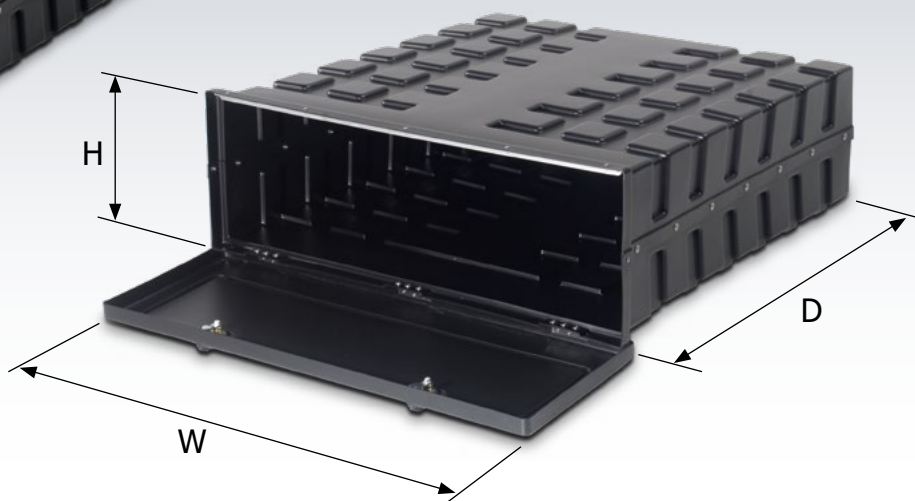


Intelligent solutions for the daily use of silo vehicles

- Coupling cabinets with a size that ideally utilises the available space and provides sufficient storage space for all couplings and flanges.
- Mat boxes with a depth that allows the storage of a CPO filter mat.
- Tank exhaust filter for clean, quiet, and filtered exhaust air. This means that unloading can also take place in residential areas and spa towns without problems.
- Air suction channels supply the compressor with the required air and avoid the sucking in of dust, dirt, and exhaust gases that are found at street level.
- Individual add-on parts for superstructure manufacturers such as remote-controlled tubulars, protective caps for under-ride side guard profiles, casing for hydraulic aggregates, and top filters. Contact us for more information!



Filter mat boxes for containers (on request)



Filter mat box

Size (width x depth x height)

960 x 960 x 340 mm

Material

HD-PE black

Weight

12.40 kg

Execution

The container is made from 2 half-shells. The two halves are then connected by means of VA rivets.

The cover (2-point lock) is riveted to the container with 3 hinges. The hinges and rivets are made from stainless steel (V2A) and the closing angles are made from aluminium. The locks are protected from the elements by means of a cap.

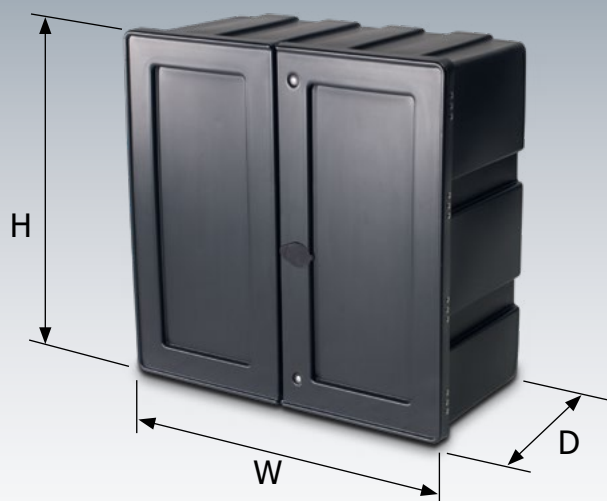
Locking system as per description on page 31

| Article | Art. No. | Price [€] |
|-------------------------------|-------------------|-----------|
| 2-point lock | | |
| With double bit security lock | 205 20 300 | |
| With cylinder lock | 205 20 400 | |

Accessories

| Article | Weight [kg] | Art. No. | Price [€] |
|--|-------------|-------------------|-----------|
| Canvas bag | 1.50 | 405 00 001 | |
| For CPO filter mat, natural colours, 100 x 120 cm, with cord | | | |

1 Canvas bag



1



2



3



4

Coupling cabinet

Size (width x depth x height)

920 x 460 x 920 mm

Material

HD-PE black

Weight

15.10 kg

Execution

The doors are riveted to the box with 4 hinges each. The hinges and rivets are made from stainless steel (V2A) and the closing angles are made from aluminium. The doors also have a circumferential EPDM seal.

The lock is protected from the elements by means of a cap.

The accessories give an overview of all couplings and flanges.

Closing systems

| Article | Art. No. | Price [€] |
|---------------------|-------------------|-----------|
| 3-point lock | | |
| With wing knob | 219 30 410 | |

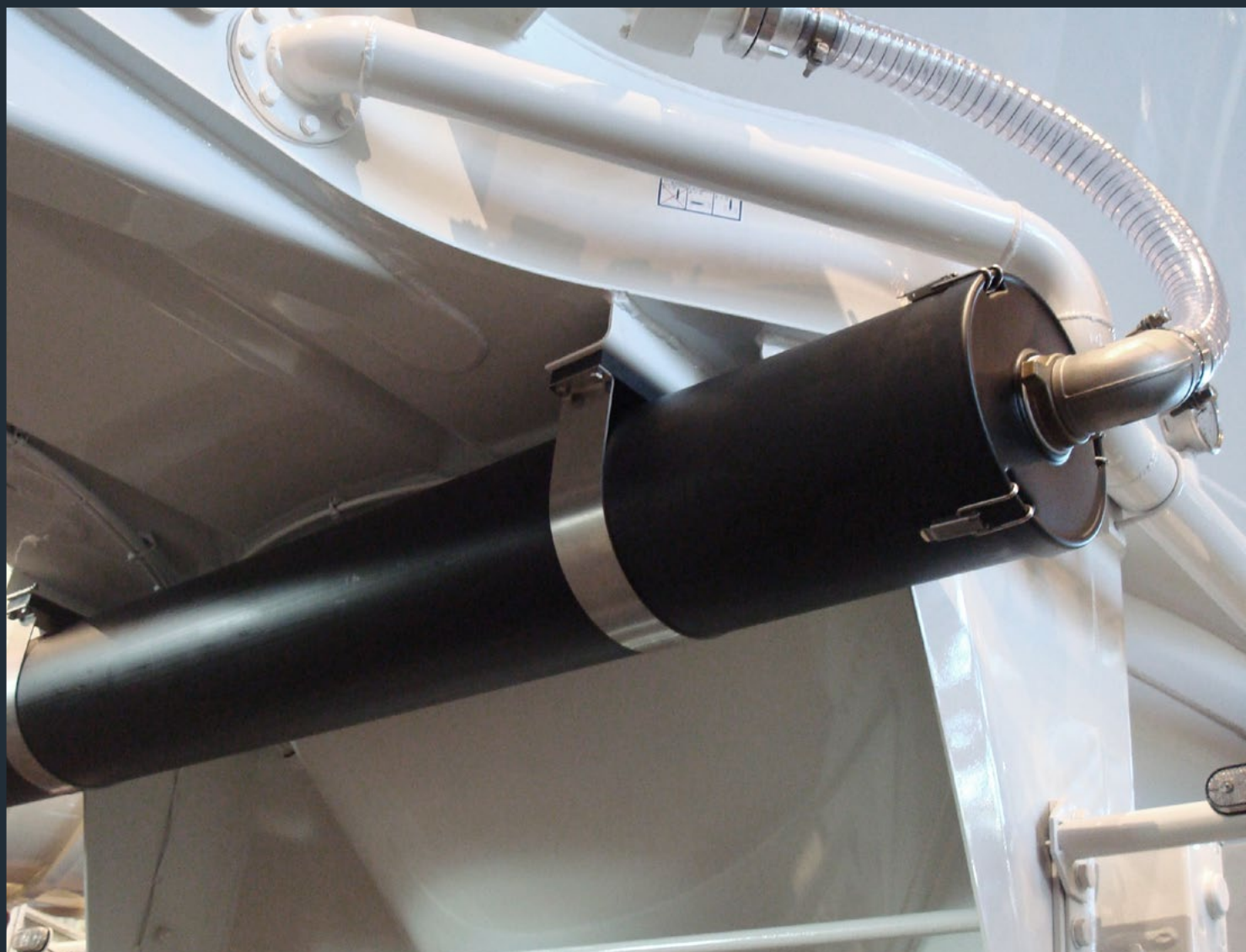
Accessories

| Article | Weight [kg] | Art. No. | Price [€] |
|---|-------------|-------------------|-----------|
| Pocket wall Black HD-PE with 10 openings + 1 hook | 3.00 | 419 10 000 | |
| Drawer Black HD-PE, edged with riveted aluminium angles on the sides, 875 x 190 x 70 mm | 1.55 | 419 20 020 | |
| Mounted bottom Black HD-PE, for 6 couplings and tube adapters, incl. belts, side holder for pipe elbow, 2 side hooks | 1.60 | 419 20 000 | |
| Shelf for securing clips Black HD-PE, edged and riveted side aluminium bracket, 4 welded tube sleeves, 2 welded support cables (VA), 880 x 250 x 160 mm | 2.90 | 419 20 025 | |

- 1 Pocket wall
- 2 Drawer
- 3 Mounted bottom
- 4 Shelf for securing clips



Coupling cabinet partition

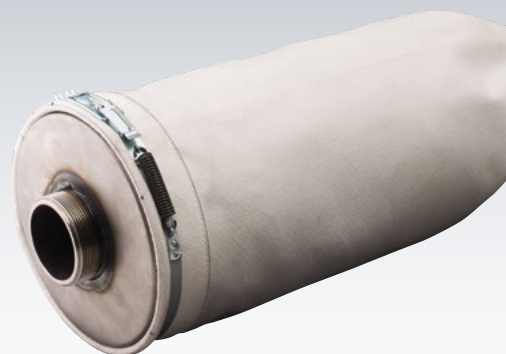




1



2



3

Exhaust air purification

Material

Tube: HD-PE black

Filter: Polyester needle felt (FOS-tex 7-022)

Execution

Tube: Tube Ø of 250 x 6.1 mm, length of 2,000 mm, front cap with filter tube is retained by means of 3 clamps (riveted to tube), end cap with air outlet slots and internal spray protect, welded to the tube.

Filter: Filter tube Ø of 200 mm, length of 1,800 mm, moisture refuse, air permeability of approx. 250 l/m²/min, filter tube lid Ø of 200 mm, 50 mm high with welded-on steep nipple. R2 ½" external thread.

Strap with control spring for filter tube.

Accessories:

Fastening clip

| Article | Weight [kg] | Art. No. | Price [€] |
|--------------------|-------------|-------------------|-----------|
| Tube | 11.20 | 104 20 001 | |
| Filter unit | 1.60 | 404 20 001 | |

Accessories

| Article | Weight [kg] | Art. No. | Price [€] |
|--|-------------|-------------------|-----------|
| Fastening clip for exhaust air purification, 2 parts, consisting of: Elbow with plates made from stainless steel and tube carrier plate made from polyethylene (HD-PE), without screws | 1.40 | 404 00 004 | |

Spare parts

| Article | Weight [kg] | Art. No. | Price [€] |
|--|-------------|-------------------|-----------|
| Front cap with hole | 0.25 | 404 00 002 | |
| Clamp for front cap | 0.05 | 413 00 009 | |
| End cap with air outlet slots and internal spray protection | 0.55 | 404 00 003 | |
| Filter tube (L = 1,800 mm) | 0.55 | 404 20 002 | |
| Filter tube lid with thread | 0.25 | 404 20 003 | |
| Strap with control spring | 0.08 | 404 20 004 | |

1 Fastening clip

2 End cap with internal spray protect

3 Filter unit